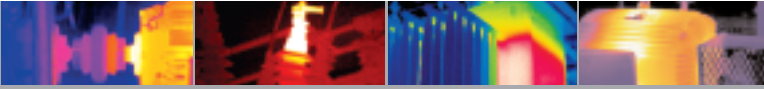




The Global Leader in Infrared Cameras

# ThermaCAM® E25

INFRARED CAMERA



The E25 is ideal for those just getting started and seeking the best price for a FLIR infrared camera.



- > Best Image Quality
- > Multiple Fixed Lens Options
- > Built-In Laser LocatIR™
- > Bright 2.5" Color LCD
- > Most Accurate Temperature Measurement
- > World's Best Infrared Detector
- > Affordable and Easy-to-use



The latest addition to the award-winning FLIR ThermaCAM® E-Series family

## Find Problems Fast

Unlike other cameras, you can use the powerful, affordable E25 in all types of harsh industrial environments to find faults in electrical and mechanical systems quickly and accurately. Store up to 100 JPEG images inside the camera for analysis on the camera or after downloading to a PC.

## Most Accurate Temperature Measurement

The E25 is the most accurate lightweight, handheld IR camera on the market today. Using the world's best infrared detector material, vanadium oxide, the E25 sees temperature differences as small as 0.20°C and provides 19,000 picture elements in each image.

## Lightweight, Rugged & Ergonomic

The E25 is built tough for hard work in the field and in all weather conditions and industrial environments — a critical design capability. Dust and splash proof, the E25 meets IP 54 standards. Unlike other cameras that might be "lab calibrated," the E25 won't seize-up in freezing cold, extreme heat, or other harsh conditions. Its exclusive Ambient Temperature Compensation (ATC) technology assures accuracy under the most challenging ambient temperature conditions.

## Download and Document

Download images to your PC quickly and create basic reports with ThermaCAM QuickView™ software and standard USB or serial cables. Document your findings simply by inserting captured JPEG images into your favorite word processing program.

## View Sensitive Thermal Images at Standard TV Rates

A maintenance-free, state-of-the-art uncooled FPA infrared detector produces crisp thermal images that reveal subtle temperature variations that can signal electro-mechanical problems. The E25 can detect problems before they become critical, helping you increase safety, reduce production downtime, and eliminate potential fires. TV rate imaging (60 Hz) allows you to scan bus ducts and capture sharp images of moving targets.

## Pinpoint Problems with Precision

The built-in Laser LocatIR™ projects a bright red dot on the target that enables you to associate the IR image with the real physical target. This feature is very useful at night or under dim lighting conditions and also greatly enhances worker safety by eliminating the tendency to "finger point" at problems in potentially hazardous electrical environments.

## Smart Power Management

Lightweight, longlife Li-Ion batteries assure uninterrupted inspections. The E25 includes an internal battery charger. A 12 VDC car/truck charger adapter is also available.



Infrared can accurately and quickly locate faults before failures, shutdowns, or even fires occur.

# ThermaCAM® E25 Technical Specifications

<b>Imaging Performance</b>	
<b>Field of view/min focus distance</b>	12° (12° x 9°/1.2m), 25° x 19°/0.3 m, or a 45° (45° x 34°/0.1m)
<b>Detector type</b>	Focal plane array (FPA) uncooled vanadium oxide microbolometer 160 x 120 pixels, 50/60 Hz
<b>Spectral range</b>	7.5 to 13 µm
<b>Spot size ratio (with 12° lens)</b>	300:1
<b>Image Presentation</b>	
<b>Display</b>	2.5" color LCD, 320 x 240 pixels in IR image
<b>Image Controls</b>	Palettes (Iron, Rainbow, B/W, B/W inv), Level, Span Auto adjust (continuous/manual)
<b>Measurement</b>	
<b>Temperature range</b>	-20°C to +250°C (-4°F to +482°F) (standard) +250° C to +900° C (+482° F to +1,652° F) (optional)
<b>Accuracy</b>	± 2°C or ± 2% of absolute temperature in °C
<b>Measurement mode</b>	Fixed spot
<b>Set-up controls</b>	Date/time, Temperature units °C/°F, Language (English, Spanish), Scale, Info field, LCD intensity (high/normal/low)
<b>Measurement corrections</b>	Reflected ambient. Automatic, based on user-input
<b>Image Storage</b>	
<b>Digital storage functions</b>	Freeze, Standard, Delete all images, Delete image, Open
<b>Image storage capacity</b>	Approx. 100 JPEG images
<b>Laser LocatIR™</b>	
<b>Classification</b>	Class 2
<b>Type</b>	Semiconductor AlGaInP Diode Laser: 1mW/635 nm (red)
<b>Power Source</b>	
<b>Battery type</b>	Li-Ion; rechargeable, field replaceable
<b>Battery operating time</b>	2 hours. Display shows battery status
<b>Charging system</b>	In camera, AC adapter or 12V from car with optional 12V cable. Optional 2 bay intelligent charger
<b>AC operation</b>	AC adapter, 90-260VAC, 50/60 Hz/12VDC out
<b>Voltage</b>	11-16VDC
<b>Power saving</b>	Automatic shutdown and sleep mode (user-selectable)
<b>Environmental</b>	
<b>Operating temperature range</b>	-15°C to +45°C (+5°F to 113°F)
<b>Storage temperature range</b>	-40°C to +70°C (-40°F to 158°F)
<b>Humidity</b>	Operating and storage 20% to 80%, non-condensing, IEC 359
<b>Water and dust resistant (encapsulation)</b>	IP 54, IEC 359
<b>Shock</b>	25G, IEC 68-2-29
<b>Vibration</b>	2G, IEC 68-2-6
<b>Physical Characteristics</b>	
<b>Weight</b>	< 1.5 lbs. (0.7 kg) including battery (with standard lens)
<b>Size (L x W x H)</b>	265mm x 80mm x 105mm (10.4" x 3.2" x 4.1")
<b>Color</b>	Yellow
<b>Tripod mounting</b>	Standard, 1/4" - 20
<b>Cover case</b>	Plastic and rubber
<b>Interfaces</b>	
<b>USB</b>	Image transfer to PC
<b>RS 232 cable (optional)</b>	Image transfer to PC
<b>Video output</b>	NTSC, standard RCA composite video
<b>Software</b>	
Compatible with ThermaCAM® Reporter, Microsoft® Office Suite	

<b>Camera includes:</b>
IR camera
Ruggedized transport case
Power supply and cord
Hand strap
Lens cap
ThermaCAM® QuickView™ software
USB cable
Video-out cable
User manual
Battery (1)
Training CD



The Global Leader in Infrared Cameras

1 800 464 6372  
[www.flirthermography.com/E25data](http://www.flirthermography.com/E25data)

Specifications subject to change. © Copyright 2005, FLIR Systems, Inc. All rights reserved. I052505PL